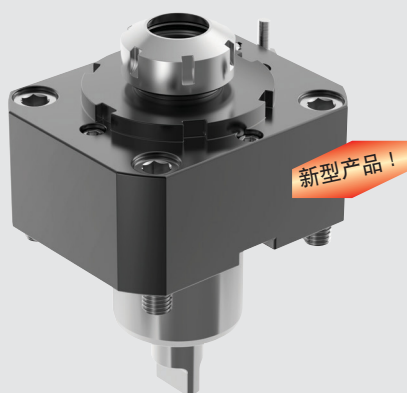


# 车床刀塔转接单元



运动刀具 • ER™



运动刀具 • KM™



静态刀具 • KM

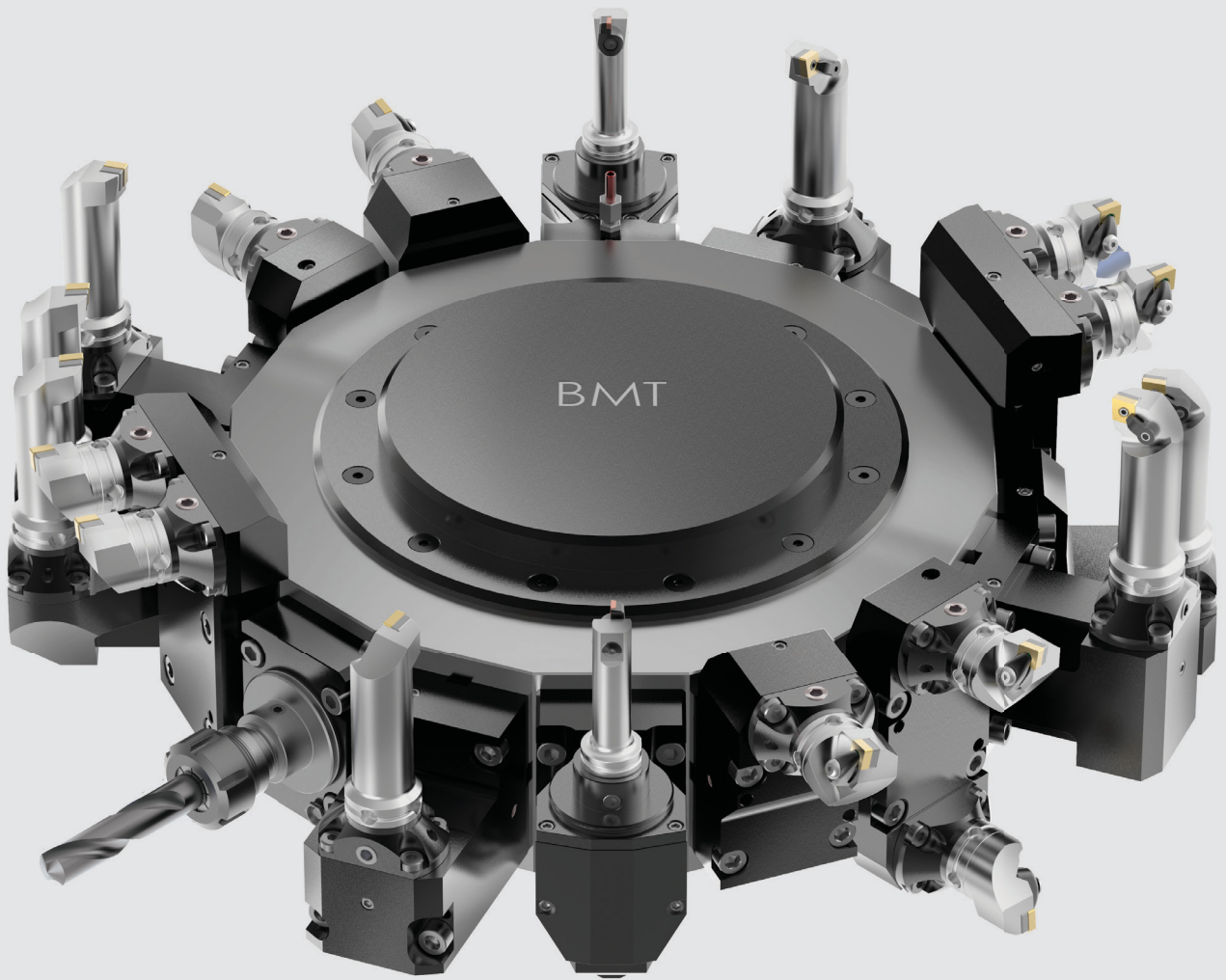
[kennametal.com/TACU](http://kennametal.com/TACU)

车床刀塔转接单元具有无与伦比的性能，可显著提高生产率。

通过提高重复定位精度并缩短设置时间，从而确保优化的机床应用效率。

车床刀塔转接单元是为了与特定机床刀塔接口配合使用而设计的。

这款产品可与多种型号机床配合使用，包括著名机床产品，如 DOOSAN™, HAAS™, HWACHEON™, HYUNDIA WIA, Mazak™, DMG Mori, 以及 OKUMA™。



- 标准产品系列，可与静态刀具和运动刀具配合使用，兼容 KM™ 规格有 32, 40, 50, 和 63。
- 最新产品：运动刀具，适用 ER 规格 25, 32 和 40。
- 运动刀具转速可达 12,000 RPM。传速比为 1:1。
- 专为与特定机床刀塔接口配合使用而设计。
- VDI 安装座，便于操作。
- 螺栓固定装置 (BMT) 确保极佳的刚性。
- 具备内冷和外冷性能。

### TACU • 刀具选择指南

- 1 第一步, 选择机床制造商
- 2 第二步, 选择机床模块
- 3 第三步, 查找机床安装代码

		机床制造商		
		DMG MORI	OKUMA™	HAAS™
2 机床模块		<ul style="list-style-type: none"> <li>DuraTurn 2050, 2550 MC</li> <li>NL/NLX 1500-2500 (20 工位刀塔)</li> <li>NT 3100, 3150, 3200</li> <li>NT/NTX 1000, 2000</li> <li>NZ/NZX 1500-2000 (16 工位刀塔)</li> <li>DIM 1500</li> </ul>	<ul style="list-style-type: none"> <li>Genos L300 MW/MYW</li> <li>LB/LU 2000-3000 EX</li> <li>M/MY/MW/MYW</li> <li>MULTUS U3000, 4000 2S</li> </ul>	<ul style="list-style-type: none"> <li>ST-20/30, SL-20/30 (BOT 刀塔)</li> </ul>
3 机床接口代码 (MMC)		<b>MMC 001</b> 页码: 55-58	<b>MMC 009</b> 页码: 62-64	<b>MMC 013</b> 页码: 34
机床模块		<ul style="list-style-type: none"> <li>NL/NLX 1500-4000 MC/Y/SMC/SY</li> <li>NLX 4000 (高扭矩铣床)</li> <li>NZX 2500 (12 工位刀塔)</li> </ul>	<ul style="list-style-type: none"> <li>ES L10</li> <li>Genos L400</li> <li>LB/LU 2500-3000 EX</li> <li>LB300, LU300</li> </ul>	<ul style="list-style-type: none"> <li>ST-20 (BMT65)</li> <li>ST-20Y (BMT65)</li> <li>ST-25 (BMT65)</li> <li>ST-25Y (BMT65)</li> <li>ST-30 (BMT65)</li> <li>ST-30Y (BMT65)</li> <li>ST-35 (BMT65)</li> <li>ST-35Y (BMT65)</li> <li>DS-30 (BMT65)</li> <li>DS-30Y (BMT65)</li> </ul>
机床接口代码 (MMC)		<b>MMC 002</b> 页码: 58-61	<b>MMC 013</b> 页码: 64	<b>MMC 036</b> 页码: 34-36
		MAZAK™		
机床模块		<ul style="list-style-type: none"> <li>Quick Turn Nexus 200, 250 M, MY (12 工位刀塔)</li> <li>Quick Turn Nexus 200, 250 MS, MSY (12 工位刀塔)</li> <li>Super Quadrex 200, 250 M (12 工位刀塔)</li> <li>Super Quick Turn 200, 250, M, MY (12 工位刀塔)</li> <li>Super Quick Turn 200, 250, MS, MSY (12 工位刀塔)</li> </ul>	<ul style="list-style-type: none"> <li>Hyper Quadrex 200, 250 MSY (12 工位刀塔)</li> <li>Multiplex 6200, 6200Y, 6250 (12 工位刀塔)</li> </ul>	<ul style="list-style-type: none"> <li>Hyper Quadrex 450 M</li> <li>Megatum Nexus 900 M</li> <li>Quick Turn Nexus 300-450 M, MY</li> <li>Slant Turn Nexus 500, 550 M</li> </ul>
机床接口代码 (MMC)		<b>MMC 016</b> 页码: 45-47	<b>MMC 017</b> 页码: 47-49	<b>MMC 018</b> 页码: 50-51
机床模块		<ul style="list-style-type: none"> <li>MP430, 630 (12 工位刀塔)</li> <li>MP6300, 6300 Y (12 工位刀塔)</li> </ul>	<ul style="list-style-type: none"> <li>Quick Turn Smart 100, 150 M S</li> <li>Quick Turn Smart 200, 250 M</li> </ul>	
机床接口代码 (MMC)		<b>MMC 019</b> 页码: 51-53	<b>MMC 020</b> 页码: 53-54	
		DOOSAN™ (DAEWOO™)	HYUNDAI WIA	HWACHEON™
机床模块		<ul style="list-style-type: none"> <li>Lynx 300M</li> <li>Puma 1500, 2000, 2500 M/Y (12 工位, BMT55)</li> <li>Puma 1500-2500 MS/SY (12 工位, BMT55)</li> <li>Puma 2100 M/MS/Y/SY (24 工位, BMT55)</li> <li>Puma 2100 M/Y (12 工位, BMT55)</li> <li>Puma 230, 240, 280 M/MS/LM</li> <li>Puma MX1600, 2100 ST (BMT55)</li> <li>Puma TL2000, 2500 M</li> <li>Puma TT1500, 1800 MS/SY</li> </ul>	<ul style="list-style-type: none"> <li>L230LMSA</li> <li>LM1600, 1800TTSY</li> <li>SKT160, 180TTMS/TTSY (BMT55)</li> </ul>	<ul style="list-style-type: none"> <li>Cutex 160 MC/SMC (BMT 55)</li> </ul>
机床接口代码 (MMC)		<b>MMC 035</b> 页码: 30-31	<b>MMC 035</b> 页码: 41-42	<b>MMC 035</b> 页码: 37-38
机床模块		<ul style="list-style-type: none"> <li>Puma 2100, 2600 M/MS/Y/SY (24 工位, BMT65)</li> <li>Puma 2100, 2600 M/MS/Y/SY (12 工位, BMT65)</li> <li>Puma 3100 M/Y/MY (12 工位, BMT65)</li> <li>Puma MX2000, 2500, 2600 T/ST/SY</li> <li>Puma VT450 M, VT450 M-2SP</li> <li>Puma Invertum 3000 M</li> <li>Puma 300 M/MS</li> <li>Puma TT2000, 2500 MS/SY</li> <li>Puma V400M</li> </ul>	<ul style="list-style-type: none"> <li>SKT200, 250TTM/MS/SY</li> <li>SKT250, 300M/MS</li> <li>L2100SY</li> <li>LM2000, 2500TTM/TTMS/TTSY</li> <li>L300M/MS</li> </ul>	<ul style="list-style-type: none"> <li>Cutex 240 MC/SMC</li> <li>Hi-Tech 200-450 MC/SMC/YMC/YSMC (BMT 65)</li> <li>T2 MC/SMC/YMC/YSMC</li> <li>VT450 MC (BMT65)</li> </ul>
机床接口代码 (MMC)		<b>MMC 036</b> 页码: 31-33	<b>MMC 036</b> 页码: 42-44	<b>MMC 036</b> 页码: 38-40



## TACU • 产品目录编号系统

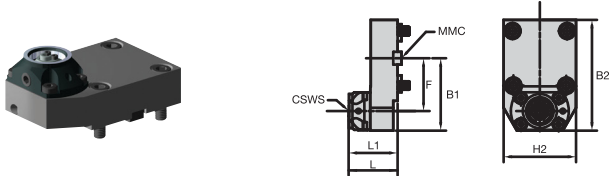
产品目录中的每一个字符都表示产品的一个具体特征。利用下面的栏框以及对应的图形，可以容易地找到适用的刀具参数值。

Turret Adapted Clamping Units		Turret Adapted Clamping Units												
DMG MORI • DRIVEN TOOL AXIAL • KM™ • MMC 001														
order number	article number	CSWS	MMC	EE	CS	MS	L	L1	width	up	up	up	up	up
80121P	TACU001KM40DA60648393	1302	001	115	40	40	124	24.5	70	70	1000	10	M12X1	10000
80121R	TACU001KM40DA60648393	1302	001	115	40	40	124	24.5	70	70	1000	10	M12X1	10000
80121B	TACU001KM40DA60648393	1302	001	115	40	40	124	24.5	70	70	1000	10	M12X1	10000
80121E	TACU001KM40DA60648393	1302	001	115	40	40	124	24.5	70	70	1000	10	M12X1	10000

TACU001KM40DA60648393

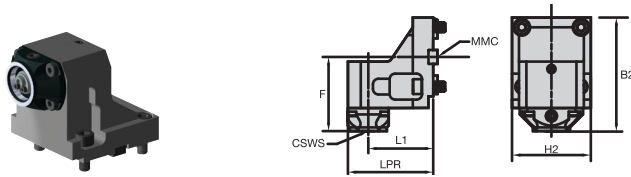


**DOOSAN™ • 轴向静态刀具 • KM™ • MMC 035**



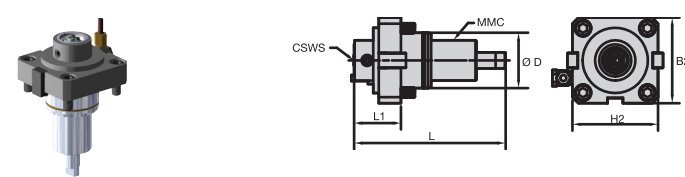
订货号	目录编号	CSWS	MMC	B1	B2	F	H2	L	L1	cp			CF
6391657	TACU035KM40SA60945565	KM40	035	85	130	62,0	85	57	57,0	Bar	PSI		i
										100	1500		

**DOOSAN • 径向静态刀具 • KM • MMC 035**



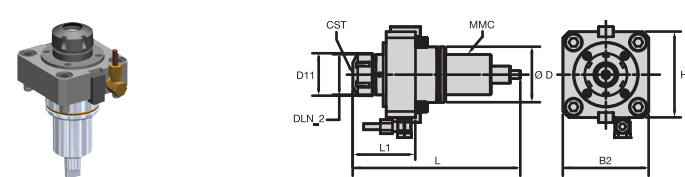
订货号	目录编号	CSWS	MMC	B2	F	H2	L1	LPR	cp			CF
6391658	TACU035KM40SR60945566	KM40	035	123	80,0	85	70,0	92	Bar	PSI		i
									100	1500		

**DOOSAN • 轴向运动刀具 • KM • MMC 035**



订货号	目录编号	CSWS	MMC	B2	D	H2	L	L1	mST (Nm)	cp			CF	CS1	max RPM
6391653	TACU035KM32DA60945561	KM32	035	85	55	85	151	46,5	25	Bar	PSI	i/e	G 1/8	6000	
6391654	TACU035KM32DA60945562	KM32	035	85	55	85	151	46,5	25	100	1500	e	G 1/8	6000	

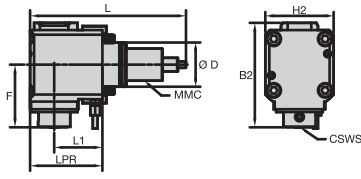
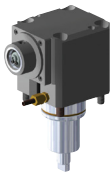
**DOOSAN • 轴向运动刀具 • ER™ • MMC 035**



订货号	目录编号	CST	MMC	B2	D	D11	DLN 2	H2	L	L1	mST (Nm)	cp			CF	CS1	max RPM
6588989	TACU035ER25DA61301859	ER25	035	85	55	42	63	85	166	60,5	25	Bar	PSI	i/e	G 1/8	6000	

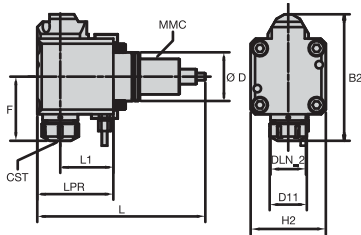
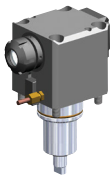


DOOSAN™ • 径向运动刀具 • KM™ • MMC 035



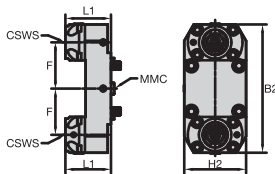
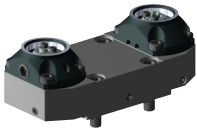
订货号	目录编号	CSWS	MMC	B2	D	F	H2	L	L1	LPR	mST (Nm)	cp			CS1	max RPM
												Bar	PSI	CF		
6391655	TACU035KM32DR60945563	KM32	035	130	55	78,0	85	194	60,0	90	25	100	1500	e	G 1/8	6000
6391656	TACU035KM32DR60945564	KM32	035	149	55	78,0	85	194	60,0	90	25	70	1000	i/e	G 1/8	6000

DOOSAN • 径向运动刀具 • ER™ • MMC 035



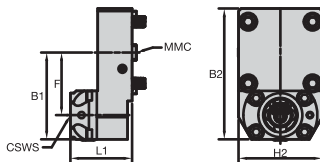
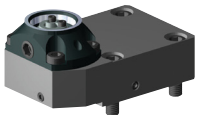
订货号	目录编号	CST	MMC	B2	D	D11	DLN 2	F	H2	L	L1	LPR	mST (Nm)	cp			CS1	max RPM
														Bar	PSI	CF		
6588990	TACU035ER25DR61301860	ER25	035	142	55	42	40	71,0	85	190	60,0	86	25	70	1000	i/e	G 1/8	6000

DOOSAN • 轴向静态刀具 • KM • MMC 036



订货号	目录编号	CSWS	MMC	B2	F	H2	L1	cp		
								Bar	PSI	CF
6391609	TACU036KM50SA60945571 *	KM50	036	197	71,0	95	70,0	100	1500	i

DOOSAN • 轴向静态刀具 • KM • MMC 036

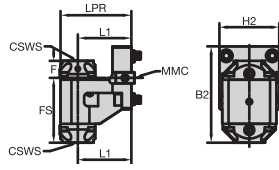


订货号	目录编号	CSWS	MMC	B1	B2	F	H2	L1	cp		
									Bar	PSI	CF
6391651	TACU036KM50SA60945573	KM50	036	99	149	71,0	95	70,0	100	1500	i



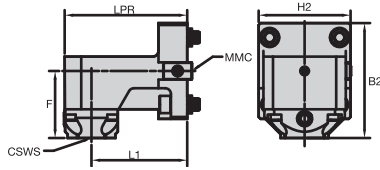
注: \* = 仅用于安装副主轴的机床。

DOOSAN™ • 径向静态刀具 • KM™ • MMC 036



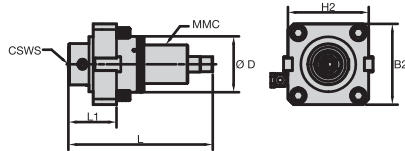
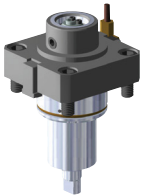
订货号	目录编号	CSWS	MMC	B2	F	FS	H2	L1	LPR	cp			CF
6391610	TACU036KM50SR60945572 *	KM50	036	153	27,0	103,0	95	85,0	113	Bar	PSI	1500	i

DOOSAN • 径向静态刀具 • KM • MMC 036



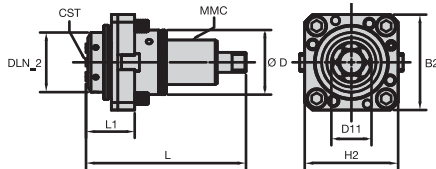
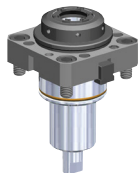
订货号	目录编号	CSWS	MMC	B2	F	H2	L1	LPR	cp			CF
6391652	TACU036KM50SR60945574	KM50	036	120	70,0	96	100,0	128	Bar	PSI	1500	i

DOOSAN • 轴向运动刀具 • KM • MMC 036



订货号	目录编号	CSWS	MMC	B2	D	H2	L	L1	mST (Nm)	cp			CF	CS1	max RPM
6391605	TACU036KM40DA60945567	KM40	036	94	65	94	168	56,0	50	Bar	PSI	1500	e	G 1/8	6000
6391606	TACU036KM40DA60945568	KM40	036	94	65	94	168	56,0	50	25	360	i/e	G 1/8	6000	

DOOSAN • 轴向运动刀具 • ER™ • MMC 036

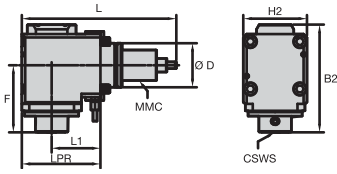
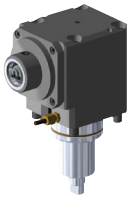


订货号	目录编号	CST	MMC	B2	D	D11	DLN_2	H2	L	L1	mST (Nm)	cp			CF	CS1	max RPM
6589001	TACU036ER32DA61301861	ER32	036	96	65	39	60	94	161	47,0	50	Bar	PSI	1000	i/e	M10X1	5000



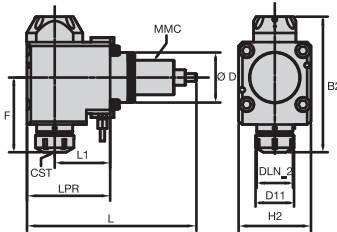
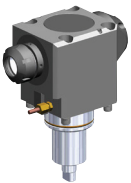
注: \* = 仅用于安装副主轴的机床。

DOOSAN™ • 径向运动刀具 • KM™ • MMC 036



订货号	目录编号	CSWS	MMC	B2	D	F	H2	L	L1	LPR	cp				max RPM	
											mST (Nm)	Bar	PSI	CF		CS1
6391607	TACU036KM40DR60945569	KM40	036	159	65	99,0	94	228	72,0	116	50	100	1500	e	G 1/8	6000
6391608	TACU036KM40DR60945570	KM40	036	178	65	99,0	94	228	72,0	116	50	70	1000	i/e	G 1/8	6000

DOOSAN • 径向运动刀具 • ER™ • MMC 036

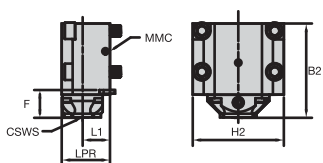


订货号	目录编号	CST	MMC	B2	D	D11	DLN_2	F	H2	L	L1	LPR	cp				max RPM	
													mST (Nm)	Bar	PSI	CF		CS1
6589002	TACU036ER32DR61301862	ER32	036	174	65	50	47	94,5	94	221	72,0	109	50	70	1000	i/e	G 1/8	6000



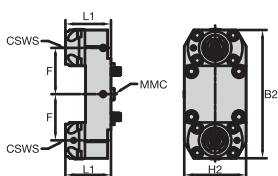
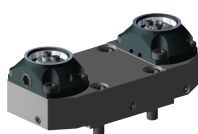


### HAAS™ • 径向静态刀具 • KM™ • MMC 013



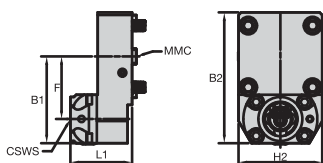
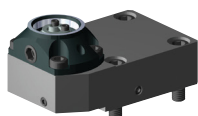
订货号	目录编号	CSWS	MMC	B2	F	H2	L1	LPR	Bar	cp	PSI	CF
6391732	TACU013KM40SR60907381	KM40	013	103	30,0	100	30,0	53	100		1500	i
6391733	TACU013KM50SR60907382	KM50	013	108	35,0	100	40,0	69	100		1500	i

### HAAS • 轴向静态刀具 • KM • MMC 036



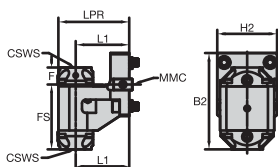
订货号	目录编号	CSWS	MMC	B2	F	H2	L1	Bar	cp	PSI	CF
6391609	TACU036KM50SA60945571 *	KM50	036	197	71,0	95	70,0	100		1500	i

### HAAS • 轴向静态刀具 • KM • MMC 036



订货号	目录编号	CSWS	MMC	B1	B2	F	H2	L1	Bar	cp	PSI	CF
6391651	TACU036KM50SA60945573	KM50	036	99	149	71,0	95	70,0	100		1500	i

### HAAS • 径向静态刀具 • KM • MMC 036

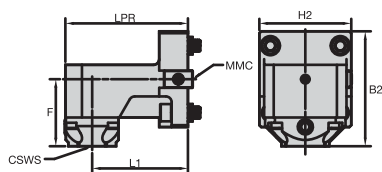
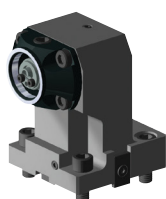


订货号	目录编号	CSWS	MMC	B2	F	FS	H2	L1	LPR	Bar	cp	PSI	CF
6391610	TACU036KM50SR60945572 *	KM50	036	153	27,0	103,0	95	85,0	113	100		1500	i



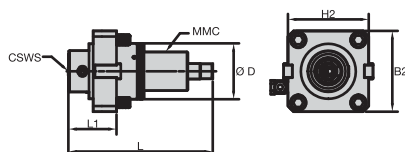
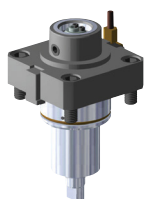
注: \* = 仅用于安装副主轴的机床。

### HAAS™ • 径向静态刀具 • KM™ • MMC 036



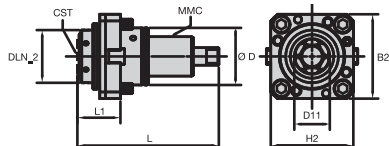
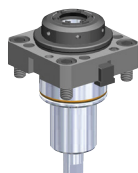
订货号	目录编号	CSWS	MMC	B2	F	H2	L1	LPR	Bar	cp	PSI	CF
6391652	TACU036KM50SR60945574	KM50	036	120	70,0	96	100,0	128	100		1500	i

### HAAS • 轴向运动刀具 • KM • MMC 036



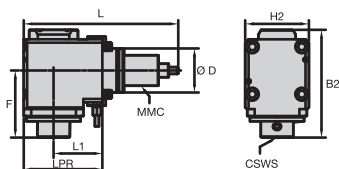
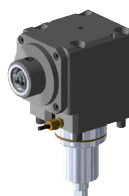
订货号	目录编号	CSWS	MMC	B2	D	H2	L	L1	mST (Nm)	Bar	cp	PSI	CF	CS1	max RPM
6391605	TACU036KM40DA60945567	KM40	036	94	65	94	168	56,0	50	100		1500	e	G 1/8	6000
6391606	TACU036KM40DA60945568	KM40	036	94	65	94	168	56,0	50	25		360	i/e	G 1/8	6000

### HAAS • 轴向运动刀具 • ER™ • MMC 036



订货号	目录编号	CST	MMC	B2	D	D11	DLN_2	H2	L	L1	mST (Nm)	Bar	cp	PSI	CF	CS1	max RPM
6589001	TACU036ER32DA61301861	ER32	036	96	65	39	60	94	161	47,0	50	70		1000	i/e	M10x1	5000

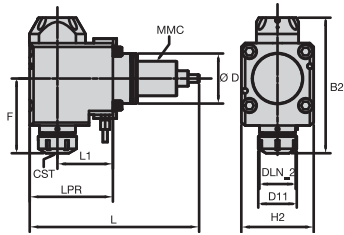
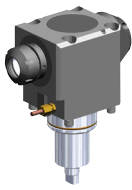
### HAAS • 径向运动刀具 • KM • MMC 036



订货号	目录编号	CSWS	MMC	B2	D	F	H2	L	L1	LPR	mST (Nm)	Bar	cp	PSI	CF	CS1	max RPM
6391607	TACU036KM40DR60945569	KM40	036	159	65	99,0	94	228	72,0	116	50	100		1500	e	G 1/8	6000
6391608	TACU036KM40DR60945570	KM40	036	178	65	99,0	94	228	72,0	116	50	70		1000	i/e	G 1/8	6000



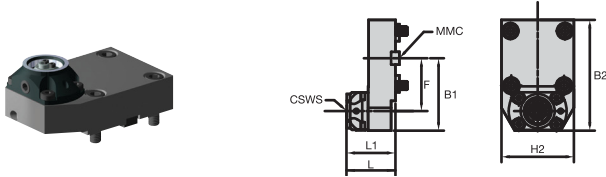
HAAS™ • 径向运动刀具 • ER™ • MMC 036



订货号	目录编号	CST	MMC	B2	D	D11	DLN_2	F	H2	L	L1	LPR	mST (Nm)	cp Bar	PSI	CF	CS1	max RPM
6589002	TACU036ER32DR61301862	ER32	036	174	65	50	47	94,5	94	221	72,0	109	50	70	1000	i/e	G 1/8	6000

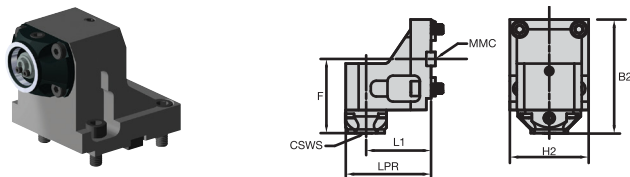
76	29	4	65

### HWACHEON™ • 轴向静态刀具 • KM™ • MMC 035



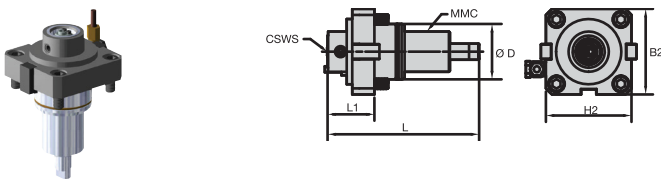
订货号	目录编号	CSWS	MMC	B1	B2	F	H2	L	L1	Bar	cp	PSI	CF
6391657	TACU035KM40SA60945565	KM40	035	85	130	62,0	85	57	57,0	100		1500	i

### HWACHEON • 径向静态刀具 • KM • MMC 035



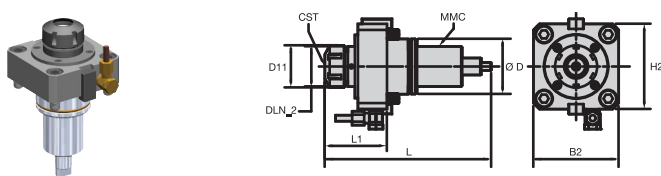
订货号	目录编号	CSWS	MMC	B2	F	H2	L1	LPR	Bar	cp	PSI	CF
6391658	TACU035KM40SR60945566	KM40	035	123	80,0	85	70,0	92	100		1500	i

### HWACHEON • 轴向运动刀具 • KM • MMC 035



订货号	目录编号	CSWS	MMC	B2	D	H2	L	L1	mST (Nm)	Bar	cp	PSI	CF	CS1	max RPM
6391653	TACU035KM32DA60945561	KM32	035	85	55	85	151	46,5	25	25		360	i/e	G 1/8	6000
6391654	TACU035KM32DA60945562	KM32	035	85	55	85	151	46,5	25	100		1500	e	G 1/8	6000

### HWACHEON • 轴向运动刀具 • ER™ • MMC 035

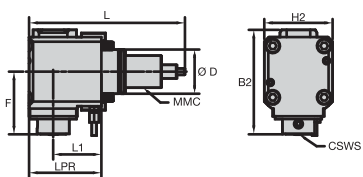
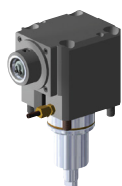


订货号	目录编号	CST	MMC	B2	D	D11	DLN_2	H2	L	L1	mST (Nm)	Bar	cp	PSI	CF	CS1	max RPM
6588989	TACU035ER25DA61301859	ER25	035	85	55	42	63	85	166	60,5	25	25		360	i/e	G 1/8	6000



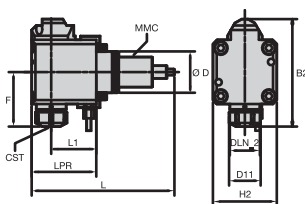
76      29      4      65

### HWACHEON™ • 径向运动刀具 • KM™ • MMC 035



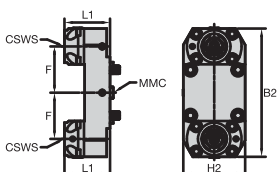
订货号	目录编号	CSWS	MMC	B2	D	F	H2	L	L1	LPR	mST (Nm)	cp Bar	PSI	CF	CS1	max RPM
6391655	TACU035KM32DR60945563	KM32	035	130	55	78,0	85	194	60,0	90	25	100	1500	e	G 1/8	6000
6391656	TACU035KM32DR60945564	KM32	035	149	55	78,0	85	194	60,0	90	25	70	1000	i/e	G 1/8	6000

### HWACHEON • 径向运动刀具 • ER™ • MMC 035



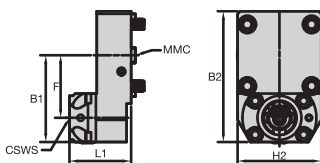
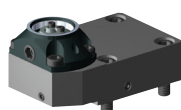
订货号	目录编号	CST	MMC	B2	D	D11	DLN_2	F	H2	L	L1	LPR	mST (Nm)	cp Bar	PSI	CF	CS1	max RPM
6588990	TACU035ER25DR61301860	ER25	035	142	55	42	40	71,0	85	190	60,0	86	25	70	1000	i/e	G 1/8	6000

### HWACHEON • 轴向静态刀具 • KM • MMC 036



订货号	目录编号	CSWS	MMC	B2	F	H2	L1	Bar	cp	PSI	CF
6391609	TACU036KM50SA60945571 *	KM50	036	197	71,0	95	70,0	100		1500	i

### HWACHEON • 轴向静态刀具 • KM • MMC 036

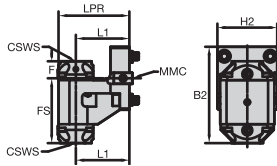


订货号	目录编号	CSWS	MMC	B1	B2	F	H2	L1	Bar	cp	PSI	CF
6391651	TACU036KM50SA60945573	KM50	036	99	149	71,0	95	70,0	100		1500	i



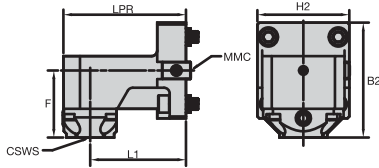
注: \* = 仅用于安装副主轴的机床。

HWACHEON™ • 径向静态刀具 • KM™ • MMC 036



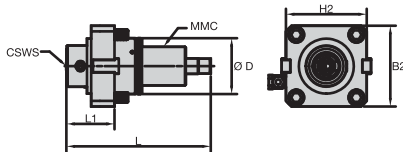
订货号	目录编号	CSWS	MMC	B2	F	FS	H2	L1	LPR	Bar	cp	PSI	CF
6391610	TACU036KM50SR60945572 *	KM50	036	153	27,0	103,0	95	85,0	113	100		1500	i

HWACHEON • 径向静态刀具 • KM • MMC 036



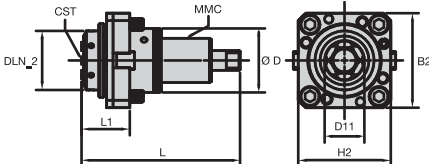
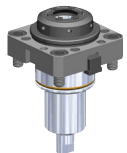
订货号	目录编号	CSWS	MMC	B2	F	H2	L1	LPR	Bar	cp	PSI	CF
6391652	TACU036KM50SR60945574	KM50	036	120	70,0	96	100,0	128	100		1500	i

HWACHEON • 轴向运动刀具 • KM • MMC 036



订货号	目录编号	CSWS	MMC	B2	D	H2	L	L1	mST (Nm)	Bar	cp	PSI	CF	CS1	max RPM
6391605	TACU036KM40DA60945567	KM40	036	94	65	94	168	56,0	50	100		1500	e	G 1/8	6000
6391606	TACU036KM40DA60945568	KM40	036	94	65	94	168	56,0	50	25		360	i/e	G 1/8	6000

HWACHEON • 轴向运动刀具 • ER™ • MMC 036

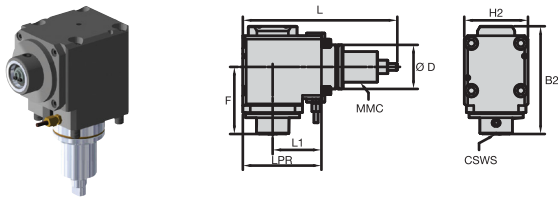


订货号	目录编号	CST	MMC	B2	D	D11	DLN_2	H2	L	L1	mST (Nm)	Bar	cp	PSI	CF	CS1	max RPM
6589001	TACU036ER32DA61301861	ER32	036	96	65	39	60	94	161	47,0	50	70		1000	i/e	M10X1	5000



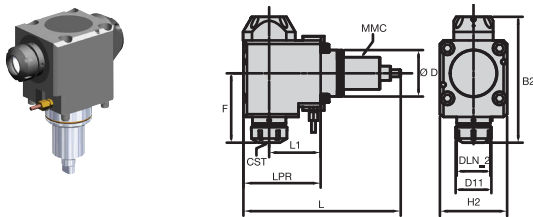
注: \* = 仅用于安装副主轴的机床。

HWACHEON™ • 径向运动刀具 • KM™ • MMC 036



订货号	目录编号	CSWS	MMC	B2	D	F	H2	L	L1	LPR	mST (Nm)	Bar	PSI	CF	CS1	max RPM
6391607	TACU036KM40DR60945569	KM40	036	159	65	99,0	94	228	72,0	116	50	100	1500	e	G 1/8	6000
6391608	TACU036KM40DR60945570	KM40	036	178	65	99,0	94	228	72,0	116	50	70	1000	i/e	G 1/8	6000

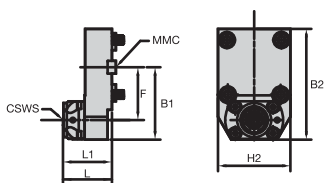
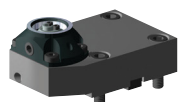
HWACHEON • 径向运动刀具 • ER™ • MMC 036



订货号	目录编号	CST	MMC	B2	D	D11	DLN_2	F	H2	L	L1	LPR	mST (Nm)	Bar	PSI	CF	CS1	max RPM
6589002	TACU036ER32DR61301862	ER32	036	174	65	50	47	94,5	94	221	72,0	109	50	70	1000	i/e	G 1/8	6000

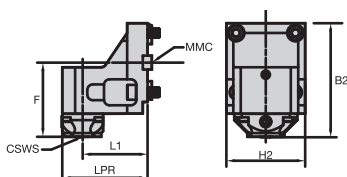


### HYUNDAI WIA • 轴向静态刀具 • KM™ • MMC 035



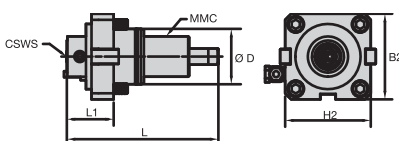
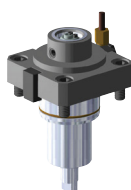
订货号	目录编号	CSWS	MMC	B1	B2	F	H2	L	L1	Bar	cp	PSI	CF
6391657	TACU035KM40SA60945565	KM40	035	85	130	62,0	85	57	57,0	100		1500	i

### HYUNDAI WIA • 径向静态刀具 • KM • MMC 035



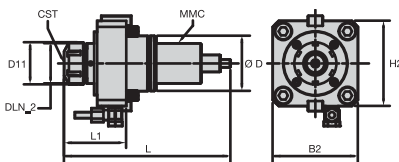
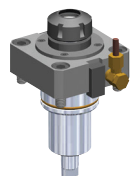
订货号	目录编号	CSWS	MMC	B2	F	H2	L1	LPR	Bar	cp	PSI	CF
6391658	TACU035KM40SR60945566	KM40	035	123	80,0	85	70,0	92	100		1500	i

### HYUNDAI WIA • 轴向运动刀具 • KM • MMC 035



订货号	目录编号	CSWS	MMC	B2	D	H2	L	L1	mST (Nm)	Bar	cp	PSI	CF	CS1	max RPM
6391653	TACU035KM32DA60945561	KM32	035	85	55	85	151	46,5	25	25		360	i/e	G 1/8	6000
6391654	TACU035KM32DA60945562	KM32	035	85	55	85	151	46,5	25	100		1500	e	G 1/8	6000

### HYUNDAI WIA • 轴向运动刀具 • ER™ • MMC 035

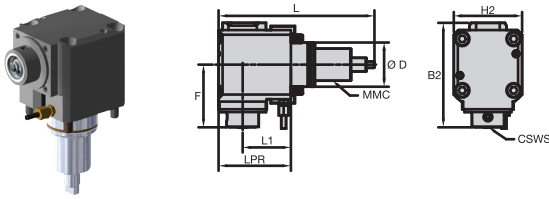


订货号	目录编号	CST	MMC	B2	D	D11	DLN_2	H2	L	L1	mST (Nm)	Bar	cp	PSI	CF	CS1	max RPM
6588989	TACU035ER25DA61301859	ER25	035	85	55	42	63	85	166	60,5	25	25		360	i/e	G 1/8	6000



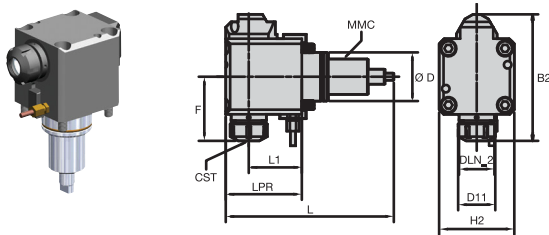


HYUNDAI WIA • 径向运动刀具 • KM™ • MMC 035



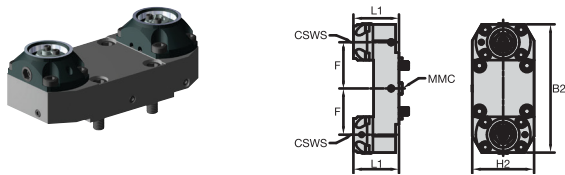
订货号	目录编号	CSWS	MMC	B2	D	F	H2	L	L1	LPR	mST (Nm)	cp Bar	PSI	CF	CS1	max RPM
6391655	TACU035KM32DR60945563	KM32	035	130	55	78,0	85	194	60,0	90	25	100	1500	e	G 1/8	6000
6391656	TACU035KM32DR60945564	KM32	035	149	55	78,0	85	194	60,0	90	25	70	1000	i/e	G 1/8	6000

HYUNDAI WIA • 径向运动刀具 • ER™ • MMC 035



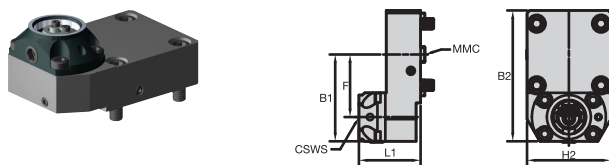
订货号	目录编号	CST	MMC	B2	D	D11	DLN_2	F	H2	L	L1	LPR	mST (Nm)	cp Bar	PSI	CF	CS1	max RPM
6588990	TACU035ER25DR61301860	ER25	035	142	55	42	40	71,0	85	190	60,0	86	25	70	1000	i/e	G 1/8	6000

HYUNDAI WIA • 轴向静态刀具 • KM • MMC 036



订货号	目录编号	CSWS	MMC	B2	F	H2	L1	Bar	cp PSI	CF
6391609	TACU036KM50SA60945571 *	KM50	036	197	71,0	95	70,0	100	1500	i

HYUNDAI WIA • 轴向静态刀具 • KM • MMC 036

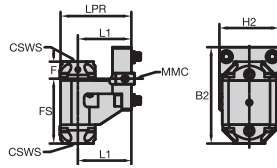


订货号	目录编号	CSWS	MMC	B1	B2	F	H2	L1	Bar	cp PSI	CF
6391651	TACU036KM50SA60945573	KM50	036	99	149	71,0	95	70,0	100	1500	i



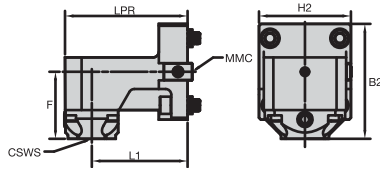
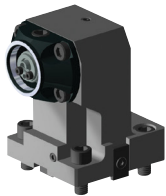
注: \* = 仅用于安装副主轴的机床。

HYUNDAI WIA • 径向静态刀具 • KM™ • MMC 036



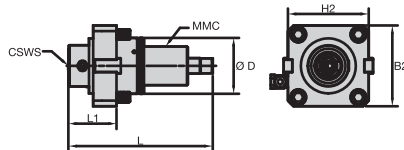
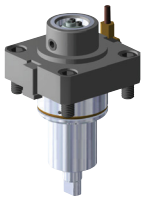
订货号	目录编号	CSWS	MMC	B2	F	FS	H2	L1	LPR	Bar	cp	PSI	CF
6391610	TACU036KM50SR60945572 *	KM50	036	153	27,0	103,0	95	85,0	113	100		1500	i

HYUNDAI WIA • 径向静态刀具 • KM • MMC 036



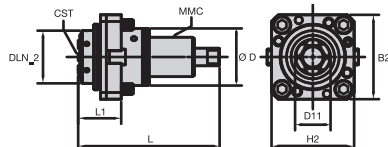
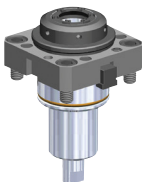
订货号	目录编号	CSWS	MMC	B2	F	H2	L1	LPR	Bar	cp	PSI	CF
6391652	TACU036KM50SR60945574	KM50	036	120	70,0	96	100,0	128	100		1500	i

HYUNDAI WIA • 轴向运动刀具 • KM • MMC 036



订货号	目录编号	CSWS	MMC	B2	D	H2	L	L1	mST (Nm)	Bar	cp	PSI	CF	CS1	max RPM
6391605	TACU036KM40DA60945567	KM40	036	94	65	94	168	56,0	50	100		1500	e	G 1/8	6000
6391606	TACU036KM40DA60945568	KM40	036	94	65	94	168	56,0	50	25		360	i/e	G 1/8	6000

HYUNDAI WIA • 轴向运动刀具 • ER™ • MMC 036

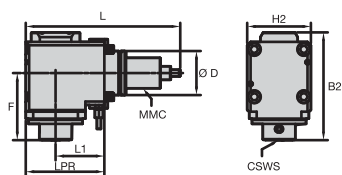
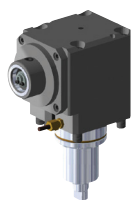


订货号	目录编号	CST	MMC	B2	D	D11	DLN_2	H2	L	L1	mST (Nm)	Bar	cp	PSI	CF	CS1	max RPM
6589001	TACU036ER32DA61301861	ER32	036	96	65	39	60	94	161	47,0	50	70		1000	i/e	M10X1	5000



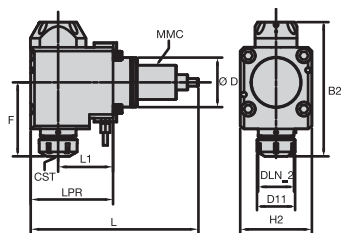
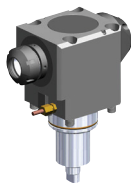
注: \* = 仅用于安装副主轴的机床。

### HYUNDAI WIA • 径向运动刀具 • KM™ • MMC 036



订货号	目录编号	CSWS	MMC	B2	D	F	H2	L	L1	LPR	mST (Nm)	Bar	cp	PSI	CF	CS1	max RPM
6391607	TACU036KM40DR60945569	KM40	036	159	65	99,0	94	228	72,0	116	50	100	1500	e	G 1/8	6000	
6391608	TACU036KM40DR60945570	KM40	036	178	65	99,0	94	228	72,0	116	50	70	1000	i/e	G 1/8	6000	

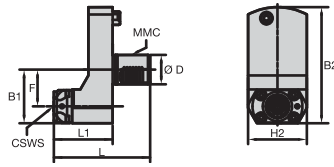
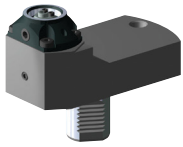
### HYUNDAI WIA • 径向运动刀具 • ER™ • MMC 036



订货号	目录编号	CST	MMC	B2	D	D11	DLN_2	F	H2	L	L1	LPR	mST (Nm)	Bar	cp	PSI	CF	CS1	max RPM
6589002	TACU036ER32DR61301862	ER32	036	174	65	50	47	94,5	94	221	72,0	109	50	70	1000	i/e	G 1/8	6000	

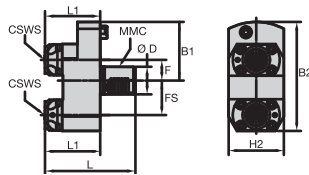


MAZAK™ • 轴向静态刀具 • KM™ • MMC 016



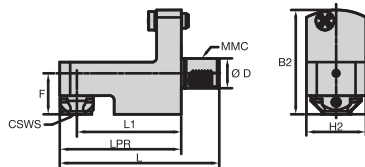
订货号	目录编号	CSWS	MMC	B1	B2	D	F	H2	L	L1	Bar	cp	PSI	CF
6401906	TACU016KM40SA60908132	KM40	016	73	158	40	50,0	80	131	80,0	100		1500	i

MAZAK • 轴向静态刀具 • KM • MMC 016



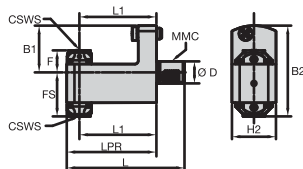
订货号	目录编号	CSWS	MMC	B1	B2	D	F	FS	H2	L	L1	Bar	cp	PSI	CF
6401907	TACU016KM40SA60908134 *	KM40	016	85	158	40	30,0	50,0	80	131	80,0	100		1500	i

MAZAK • 径向静态刀具 • KM • MMC 016



订货号	目录编号	CSWS	MMC	B2	D	F	H2	L	L1	LPR	Bar	cp	PSI	CF
6401908	TACU016KM40SR60908135	KM40	016	140	40	55,0	80	214	140,0	163	100		1500	i

MAZAK • 径向静态刀具 • KM • MMC 016

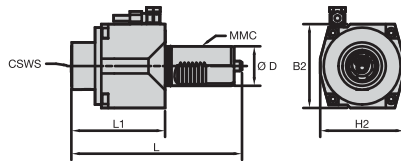
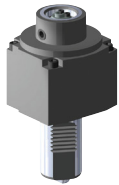


订货号	目录编号	CSWS	MMC	B1	B2	D	F	FS	H2	L	L1	LPR	Bar	cp	PSI	CF
6401909	TACU016KM40SR60908136 *	KM40	016	85	165	40	40,0	80,0	80	214	140,0	163	100		1500	i

76	29	4	65

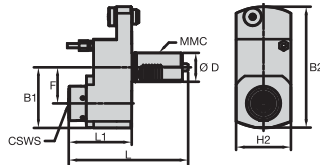
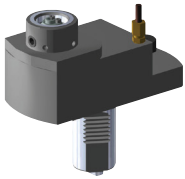
注: \* = 仅用于安装副主轴的机床。

MAZAK™ • 轴向运动刀具 • KM™ • MMC 016



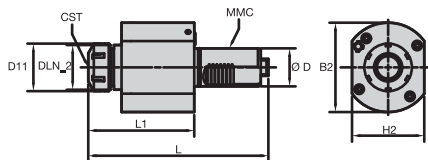
订货号	目录编号	CSWS	MMC	B2	D	H2	L	L1	mST (Nm)	cp Bar	PSI	CF	CS1	max RPM
6401890	TACU016KM40DA60908100	KM40	016	85	40	85	173	95,0	50	100	1500	e	G 1/8	6000
6401901	TACU016KM40DA60908102	KM40	016	85	40	85	173	95,0	50	25	360	i/e	G 1/8	6000

MAZAK • 轴向运动刀具 • KM • MMC 016



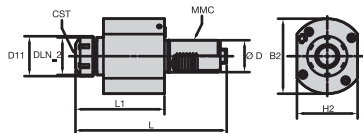
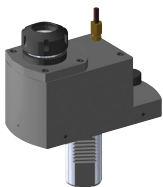
订货号	目录编号	CSWS	MMC	B1	B2	D	F	H2	L	L1	mST (Nm)	cp Bar	PSI	CF	CS1	max RPM
6401902	TACU016KM40DA60908120	KM40	016	84	168	40	50,0	76	166	87,5	50	100	1500	e	G 1/8	6000
6401903	TACU016KM40DA60908125	KM40	016	84	168	40	50,0	78	191	112,5	50	70	1000	i/e	G 1/8	6000

MAZAK • 轴向运动刀具 • ER™ • MMC 016



订货号	目录编号	CST	MMC	B2	D	D11	DLN_2	H2	L	L1	mST (Nm)	cp Bar	PSI	CF	CS1	max RPM
6588967	TACU016ER32DA61301847	ER32	016	94	40	50	47	76	190	109,0	50	25	360	i/e	M12X1	6000

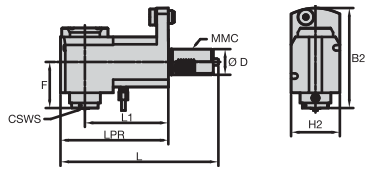
MAZAK • 轴向运动刀具 • ER • MMC 016



订货号	目录编号	CST	MMC	B1	B2	D	D11	DLN_2	F	H2	L	L1	mST (Nm)	cp Bar	PSI	CF	CS1	max RPM
6588968	TACU016ER32DA61301848	ER32	016	84	168	40	50	47	50,0	78	200	118,5	50	70	1000	i/e	G 1/8	6000

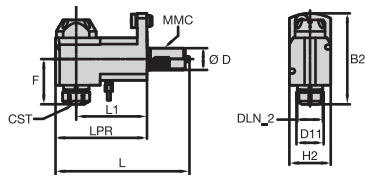
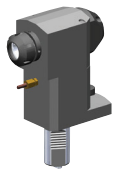


MAZAK™ • 径向运动刀具 • KM™ • MMC 016



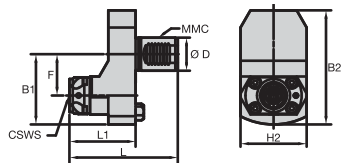
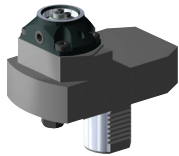
订货号	目录编号	CSWS	MMC	B2	D	F	H2	L	L1	LPR	mST (Nm)	cp			CF	CS1	max RPM
6401904	TACU016KM40DR60908103	KM40	016	157	40	72,5	76	246	130,0	168	50	100	1500	e	G 1/8	6000	
6401905	TACU016KM40DR60908107	KM40	016	157	40	72,5	76	246	130,0	168	50	70	1000	i/e	G 1/8	6000	

MAZAK • 径向运动刀具 • ER™ • MMC 016



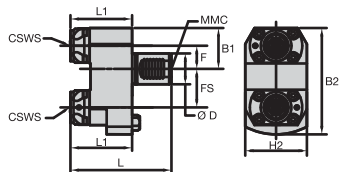
订货号	目录编号	CST	MMC	B2	D	D11	DLN_2	F	H2	L	L1	LPR	mST (Nm)	cp			CF	CS1	max RPM
6588969	TACU016ER32DR61301849	ER32	016	165	40	50	47	80,5	76	246	130,0	168	50	70	1000	i/e	G 1/8	6000	

MAZAK • 轴向静态刀具 • KM • MMC 017



订货号	目录编号	CSWS	MMC	B1	B2	D	F	H2	L	L1	Bar	cp		CF
6391714	TACU017KM40SA60908159	KM40	017	85	138	40	50,0	80	131	80,0	100	1500	i	

MAZAK • 轴向静态刀具 • KM • MMC 017

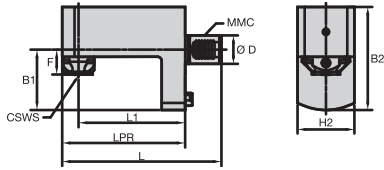


订货号	目录编号	CSWS	MMC	B1	B2	D	F	FS	H2	L	L1	Bar	cp		CF
6391715	TACU017KM40SA60908160 *	KM40	017	53	138	40	30,0	50,0	80	131	80,0	100	1500	i	



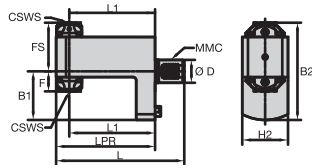
注: \* = 仅用于安装副主轴的机床。

MAZAK™ • 径向静态刀具 • KM™ • MMC 017



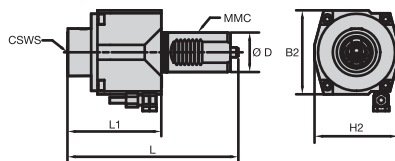
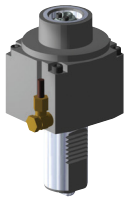
订货号	目录编号	CSWS	MMC	B1	B2	D	F	H2	L	L1	LPR	cp			CF
												Bar	PSI		
6391716	TACU017KM40SR60908161	KM40	017	85	145	40	35,0	80	224	150,0	173	100	1500		i

MAZAK • 径向静态刀具 • KM • MMC 017



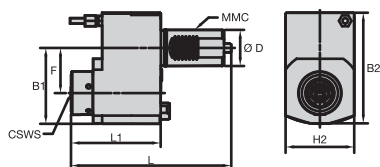
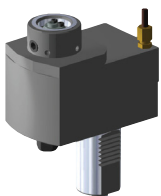
订货号	目录编号	CSWS	MMC	B1	B2	D	F	FS	H2	L	L1	LPR	cp			CF
													Bar	PSI		
6391717	TACU017KM40SR60908162 *	KM40	017	85	170	40	35,0	85,0	80	224	150,0	173	100	1500		i

MAZAK • 轴向运动刀具 • KM • MMC 017



订货号	目录编号	CSWS	MMC	B2	D	H2	L	L1	mST (Nm)	cp			CF	CS1	max RPM
										Bar	PSI				
6391698	TACU017KM40DA60908150	KM40	017	85	40	85	173	95,0	50	100	1500	e	G 1/8	6000	
6391699	TACU017KM40DA60908151	KM40	017	85	40	85	173	95,0	50	25	360	i/e	G 1/8	6000	

MAZAK • 轴向运动刀具 • KM • MMC 017

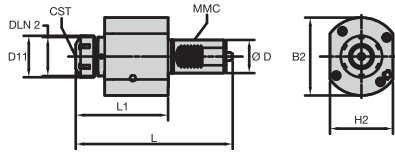


订货号	目录编号	CSWS	MMC	B1	B2	D	F	H2	L	L1	mST (Nm)	cp			CF	CS1	max RPM
												Bar	PSI				
6391700	TACU017KM40DA60908155	KM40	017	84	123	40	50,0	76	178	99,5	50	100	1500	e	G 1/8	6000	
6391711	TACU017KM40DA60908156	KM40	017	84	123	40	50,0	78	191	112,5	50	70	1000	i/e	G 1/8	6000	



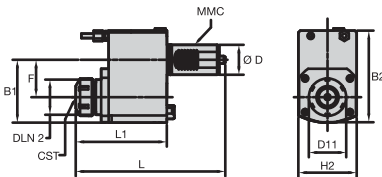
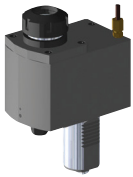
注: \* = 仅用于安装副主轴的机床。

MAZAK™ • 轴向运动刀具 • ER™ • MMC 017



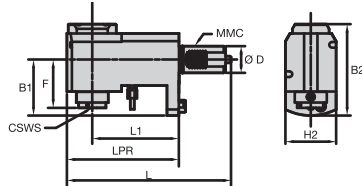
订货号	目录编号	CST	MMC	B2	D	D11	DLN_2	H2	L	L1	mST (Nm)	cp Bar	PSI	CF	CS1	max RPM
6588970	TACU017ER32DA61301850	ER32	017	94	40	50	47	76	190	109,0	50	25	360	i/e	M12X1	6000

MAZAK • 轴向运动刀具 • ER • MMC 017



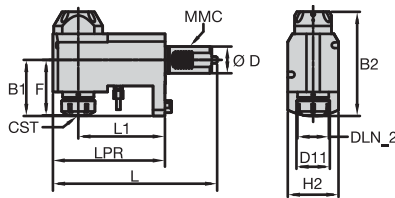
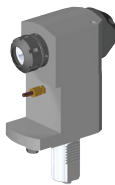
订货号	目录编号	CST	MMC	B1	B2	D	D11	DLN_2	F	H2	L	L1	mST (Nm)	cp Bar	PSI	CF	CS1	max RPM
6588981	TACU017ER32DA61301851	ER32	017	84	123	40	50	47	50,0	78	200	119,5	50	70	1000	i/e	G 1/8	6000

MAZAK • 径向运动刀具 • KM™ • MMC 017



订货号	目录编号	CSWS	MMC	B1	B2	D	F	H2	L	L1	LPR	mST (Nm)	cp Bar	PSI	CF	CS1	max RPM
6391712	TACU017KM40DR60908157	KM40	017	84	137	40	72,5	76	246	130,0	168	50	100	1500	e	G 1/8	6000
6391713	TACU017KM40DR60908158	KM40	017	84	156	40	72,5	76	246	130,0	168	50	70	1000	i/e	G 1/8	6000

MAZAK • 径向运动刀具 • ER • MMC 017

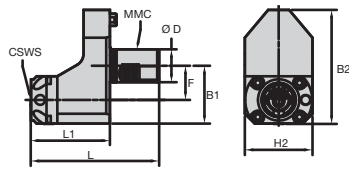


订货号	目录编号	CST	MMC	B1	B2	D	D11	DLN_2	F	H2	L	L1	LPR	mST (Nm)	cp Bar	PSI	CF	CS1	max RPM
6588982	TACU017ER32DR61301852	ER32	017	84	156	40	50	47	80,5	76	246	130,0	168	50	70	1000	i/e	G 1/8	6000



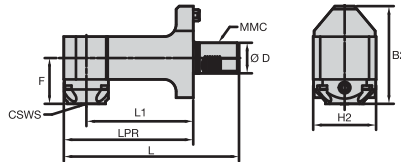


MAZAK™ • 轴向静态刀具 • KM™ • MMC 018



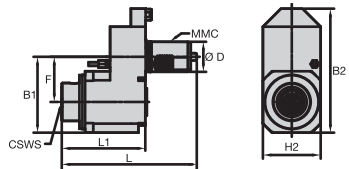
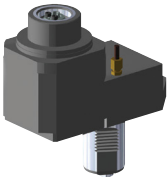
订货号	目录编号	CSWS	MMC	B1	B2	D	F	H2	L	L1	cp	Bar	PSI	CF
6391696	TACU018KM63SA60908174	KM63	018	88	173	50	52,0	103	195	120,0	100	1500	i	

MAZAK • 径向静态刀具 • KM • MMC 018



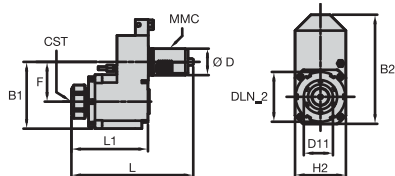
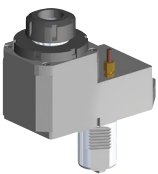
订货号	目录编号	CSWS	MMC	B2	D	F	H2	L	L1	LPR	cp	Bar	PSI	CF
6391697	TACU018KM63SR60908176	KM63	018	160	50	75,0	103	287	175,0	212	100	1500	i	

MAZAK • 轴向运动刀具 • KM • MMC 018



订货号	目录编号	CSWS	MMC	B1	B2	D	F	H2	L	L1	mST (Nm)	cp	Bar	PSI	CF	CS1	max RPM
6391692	TACU018KM50DA60908166	KM50	018	126	206	50	75,0	96	225	139,5	100	100	1500	e	G 1/8	6000	
6391693	TACU018KM50DA60908171	KM50	018	126	206	50	75,0	96	225	139,5	100	70	1000	i/e	G 1/8	6000	

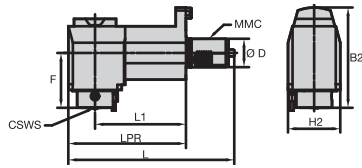
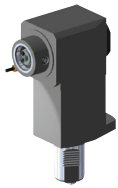
MAZAK • 轴向运动刀具 • ER™ • MMC 018



订货号	目录编号	CST	MMC	B1	B2	D	D11	DLN_2	F	H2	L	L1	mST (Nm)	cp	Bar	PSI	CF	CS1	max RPM
6588983	TACU018ER40DA61301853	ER40	018	126	206	50	63	94	75,0	96	230	141,5	100	70	1000	i/e	G 1/8	6000	

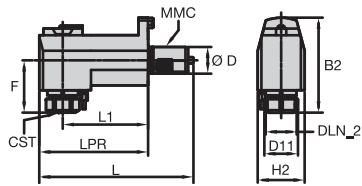
76	29	4	65

MAZAK™ • 径向运动刀具 • KM™ • MMC 018



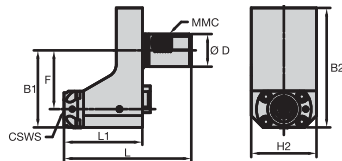
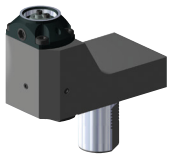
订货号	目录编号	CSWS	MMC	B2	D	F	H2	L	L1	LPR	mST (Nm)	cp		CF	CS1	max RPM
												Bar	PSI			
6391694	TACU018KM50DR60908172	KM50	018	177	50	96,5	92	292	160,0	207	100	100	1500	e	G 1/8	6000
6391695	TACU018KM50DR60908173	KM50	018	177	50	96,5	92	292	160,0	207	100	70	1000	i/e	G 1/8	6000

MAZAK • 径向运动刀具 • ER™ • MMC 018



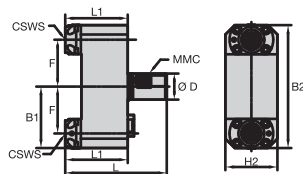
订货号	目录编号	CST	MMC	B2	D	D11	DLN_2	F	H2	L	L1	LPR	mST (Nm)	cp		CF	CS1	max RPM
														Bar	PSI			
6588984	TACU018ER40DR61301854	ER40	018	175	50	63	58	94,5	88	289	160,0	204	100	70	1000	i/e	G 1/8	6000

MAZAK • 轴向静态刀具 • KM • MMC 019



订货号	目录编号	CSWS	MMC	B1	B2	D	F	H2	L	L1	Bar	cp		CF
												PSI		
6391679	TACU019KM50SA60945552	KM50	019	118	183	50	90,0	100	195	120,0	100	1500		i

MAZAK • 轴向静态刀具 • KM • MMC 019

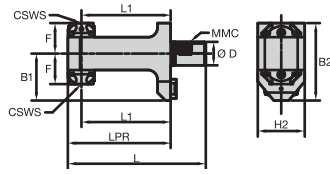


订货号	目录编号	CSWS	MMC	B1	B2	D	F	H2	L	L1	Bar	cp		CF
												PSI		
6391680	TACU019KM50SA60945553 *	KM50	019	118	236	50	90,0	100	195	120,0	100	1500		i



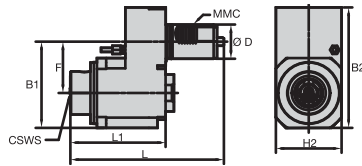
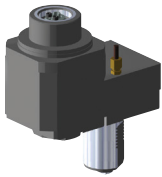
注: \* = 仅用于安装副主轴的机床。

MAZAK™ • 径向静态刀具 • KM™ • MMC 019



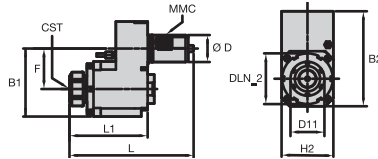
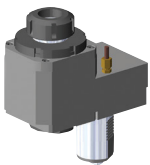
订货号	目录编号	CSWS	MMC	B1	B2	D	F	H2	L	L1	LPR	cp			CF
												Bar	PSI		
6391691	TACU019KM50SR60945554 *	KM50	019	100	165	50	65,0	100	294	190,0	219	100	1500		i

MAZAK • 轴向运动刀具 • KM • MMC 019



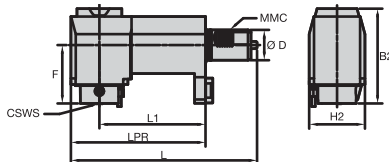
订货号	目录编号	CSWS	MMC	B1	B2	D	F	H2	L	L1	mST (Nm)	cp			CF	CS1	max RPM
												Bar	PSI				
6391675	TACU019KM50DA60945548	KM50	019	126	176	50	75,0	96	225	139,5	100	100	1500	e	G 1/8	4000	
6391676	TACU019KM50DA60945549	KM50	019	126	176	50	75,0	96	225	139,5	100	70	1000	i/e	G 1/8	4000	

MAZAK • 轴向运动刀具 • ER™ • MMC 019



订货号	目录编号	CST	MMC	B1	B2	D	D11	DLN_2	F	H2	L	L1	mST (Nm)	cp			CF	CS1	max RPM
														Bar	PSI				
6588985	TACU019ER40DA61301855	ER40	019	126	176	50	63	94	75,0	96	230	141,5	100	70	1000	i/e	G 1/8	4000	

MAZAK • 径向运动刀具 • KM • MMC 019

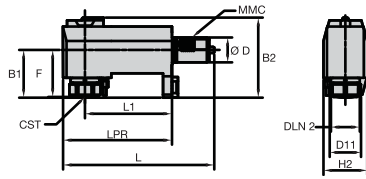


订货号	目录编号	CSWS	MMC	B2	D	F	H2	L	L1	LPR	mST (Nm)	cp			CF	CS1	max RPM
												Bar	PSI				
6391677	TACU019KM50DR60945550	KM50	019	157	50	96,5	92	307	175,0	222	100	100	1500	e	G 1/8	4000	
6391678	TACU019KM50DR60945551	KM50	019	162	50	96,5	92	307	175,0	222	100	70	1000	i/e	G 1/8	4000	



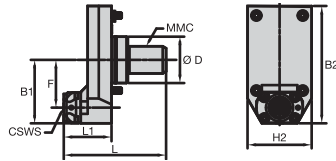
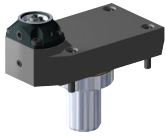
注: \* = 仅用于安装副主轴的机床。

MAZAK™ • 径向运动刀具 • ER™ • MMC 019



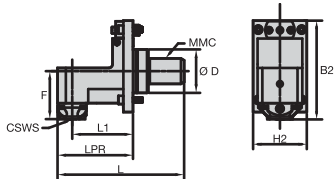
订货号	目录编号	CST	MMC	B1	B2	D	D11	DLN_2	F	H2	L	L1	LPR	mST (Nm)	cp		CF	CS1	max RPM	
6588986	TACU019ER40DR61301856	ER40	019	96	161	50	63	58	94,5	88	304	175,0	219	100	Bar	70	1000	i/e	G 1/8	4000

MAZAK • 轴向静态刀具 • KM™ • MMC 020



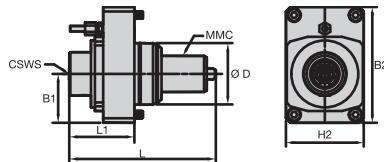
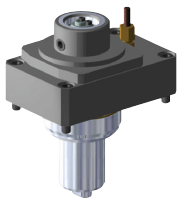
订货号	目录编号	CSWS	MMC	B1	B2	D	F	H2	L	L1	Bar	cp		CF
6391673	TACU020KM40SA60945559	KM40	020	93	172	68	70,0	94	150	70,0	100	PSI	1500	i

MAZAK • 径向静态刀具 • KM • MMC 020



订货号	目录编号	CSWS	MMC	B2	D	F	H2	L	L1	LPR	Bar	cp		CF
6391674	TACU020KM40SR60945560	KM40	020	154	68	75,0	84	198	95,0	118	100	PSI	1500	i

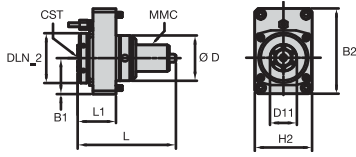
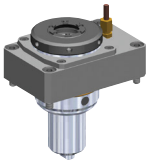
MAZAK • 轴向运动刀具 • KM • MMC 020



订货号	目录编号	CSWS	MMC	B1	B2	D	H2	L	L1	mST (Nm)	cp		CF	CS1	max RPM
6391659	TACU020KM40DA60945555	KM40	020	54	128	68	86	162	72,0	50	100	1500	e	G 1/8	6000
6391660	TACU020KM40DA60945556	KM40	020	54	128	68	86	162	72,0	50	25	360	i/e	G 1/8	6000

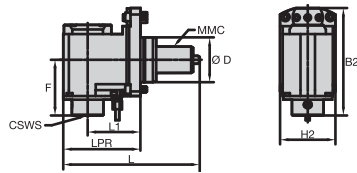
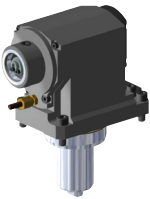


MAZAK™ • 轴向运动刀具 • ER™ • MMC 020



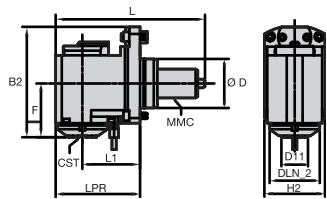
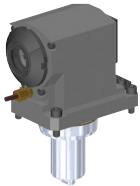
订货号	目录编号	CST	MMC	B1	B2	D	D11	DLN_2	H2	L	L1	mST (Nm)	cp Bar	PSI	CF	CS1	max RPM
6588987	TACU020ER32DA61301857	ER32	020	54	128	68	39	75	86	148	55,0	50	25	360	i/e	G 1/8	6000

MAZAK • 径向运动刀具 • KM™ • MMC 020



订货号	目录编号	CSWS	MMC	B2	D	F	H2	L	L1	LPR	mST (Nm)	cp Bar	PSI	CF	CS1	max RPM
6391671	TACU020KM40DR60945557	KM40	020	163	68	84,5	84	207	80,0	117	50	100	1500	e	G 1/8	6000
6391672	TACU020KM40DR60945558	KM40	020	163	68	84,5	84	198	80,0	117	50	70	1000	i/e	G 1/8	6000

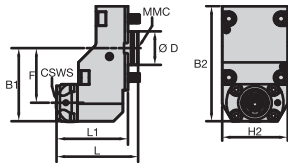
MAZAK • 径向运动刀具 • ER • MMC 020



订货号	目录编号	CST	MMC	B2	D	D11	DLN_2	F	H2	L	L1	LPR	mST (Nm)	cp Bar	PSI	CF	CS1	max RPM
6588988	TACU020ER32DR61301858	ER32	020	151	68	39	70	72,5	84	207	80,0	117	50	70	1000	i/e	G 1/8	6000

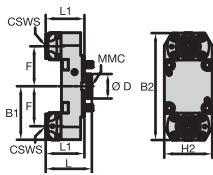
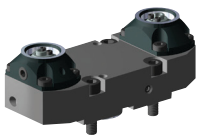


DMG MORI • 轴向静态刀具 • KM™ • MMC 001



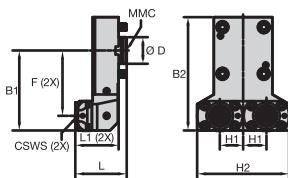
订货号	目录编号	CSWS	MMC	B1	B2	D	F	H2	L	L1	Bar	cp	PSI	CF
6405025	TACU001KM40SA60649623	KM40	001	87	137	40	65,0	78	99	85,0	100		1500	i

DMG MORI • 轴向静态刀具 • KM • MMC 001



订货号	目录编号	CSWS	MMC	B1	B2	D	F	H2	L	L1	Bar	cp	PSI	CF
6405026	TACU001KM40SA60649626 *	KM40	001	87	174	40	65,0	78	75	63,0	100		1500	i

DMG MORI • 轴向静态刀具 • KM • MMC 001

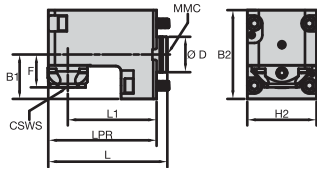
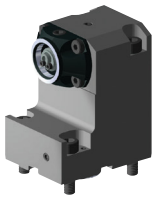


订货号	目录编号	CSWS	MMC	B1	B2	D	F	H1	H2	L	L1	Bar	cp	PSI	CF
6405384	TACU001KM40SA60649631 **	KM40	001	120	170	40	98,0	35	138	77	65,0	100		1500	i

76	29	4	65

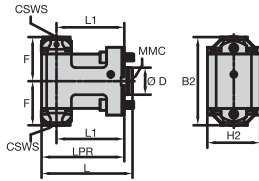
注: \* = 仅用于安装副主轴的机床。  
 \*\* = 仅用于具有“Y”轴加工能力的机床。

DMG MORI • 径向静态刀具 • KM™ • MMC 001



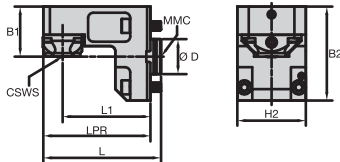
订货号	目录编号	CSWS	MMC	B1	B2	D	F	H2	L	L1	LPR	Bar	cp	PSI	CF
6405027	TACU001KM40SR60649632	KM40	001	50	100	40	37,0	78	134	100,0	122	100		1500	i

DMG MORI • 径向静态刀具 • KM • MMC 001



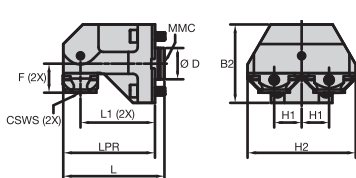
订货号	目录编号	CSWS	MMC	B2	D	F	H2	L	L1	LPR	Bar	cp	PSI	CF
6405028	TACU001KM40SR60649633 *	KM40	001	130	40	65,0	78	134	100,0	122	100		1500	i

DMG MORI • 径向静态刀具 • KM • MMC 001



订货号	目录编号	CSWS	MMC	B1	B2	D	H2	L	L1	LPR	Bar	cp	PSI	CF
6405385	TACU001KM40SR60649634	KM40	001	50	107	40	78	134	100,0	122	100		1500	i

DMG MORI • 径向静态刀具 • KM • MMC 001

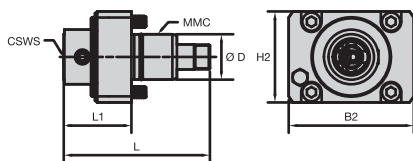


订货号	目录编号	CSWS	MMC	B2	D	F	H1	H2	L	L1	LPR	Bar	cp	PSI	CF
6405386	TACU001KM40SR60649635 **	KM40	001	100	40	37,0	35	138	129	95,0	117	100		1500	i



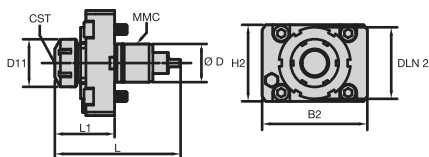
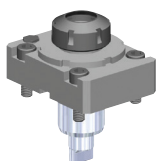
注: \* = 仅用于安装副主轴的机床。  
 \*\* = 仅用于具有“Y”轴加工能力的机床。

DMG MORI • 轴向运动刀具 • KM™ • MMC 001



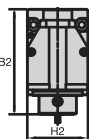
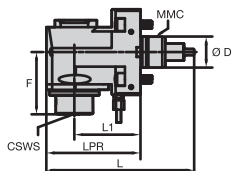
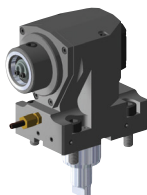
订货号	目录编号	CSWS	MMC	B2	D	H2	L	L1	mST (Nm)	cp		CF	CS1	max RPM
									Bar	PSI				
6201237	TACU001KM32DA60648431	KM32	001	110	40	80	124	54,5	32	70	1000	i/e	M12X1	12000
6201238	TACU001KM32DA60648437	KM32	001	110	40	80	124	54,5	32	70	1000	e	M12X1	12000
6201235	TACU001KM40DA60647158	KM40	001	110	40	80	129	59,5	32	70	1000	i/e	M12X1	6000
6201236	TACU001KM40DA60648393	KM40	001	110	40	80	129	59,5	32	70	1000	e	M12X1	6000

DMG MORI • 轴向运动刀具 • ER™ • MMC 001



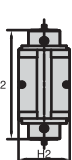
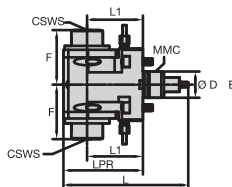
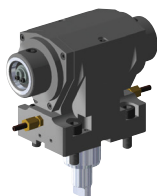
订货号	目录编号	CST	MMC	B2	D	D11	DLN_2	H2	L	L1	mST (Nm)	cp		CF	CS1	max RPM
											Bar	PSI				
6588935	TACU001ER25DA61301836	ER25	001	110	40	42	75	80	128	57,0	32	70	1000	i/e	M12X1	12000
6588933	TACU001ER32DA61301834	ER32	001	110	40	50	75	80	132	60,0	32	70	1000	i/e	M12X1	6000

DMG MORI • 径向运动刀具 • KM • MMC 001



订货号	目录编号	CSWS	MMC	B2	D	F	H2	L	L1	LPR	mST (Nm)	cp		CF	CS1	max RPM
											Bar	PSI				
6201263	TACU001KM32DR60648443	KM32	001	128	40	72,5	78	190	85,0	121	32	100	1500	e	G 1/8	12000
6201264	TACU001KM32DR60648444	KM32	001	132	40	72,5	78	190	85,0	121	32	70	1000	i/e	G 1/8	12000
6201239	TACU001KM40DR60648439	KM40	001	135	40	80,0	78	190	85,0	121	32	100	1500	e	G 1/8	6000
6201240	TACU001KM40DR60648440	KM40	001	140	40	80,0	78	190	85,0	121	32	70	1000	i/e	G 1/8	6000

DMG MORI • 径向运动刀具 • KM • MMC 001



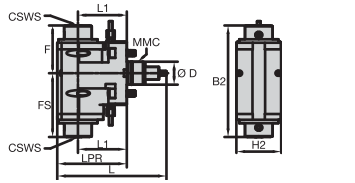
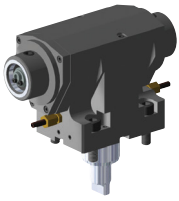
订货号	目录编号	CSWS	MMC	B2	D	F	H2	L	L1	LPR	mST (Nm)	cp		CF	CS1	max RPM
											Bar	PSI				
6201261	TACU001KM40DR60648441 *	KM40	001	166	40	83,0	78	190	85,0	121	32	100	1500	e	G 1/8	6000



注: \* = 仅用于安装副主轴的机床。

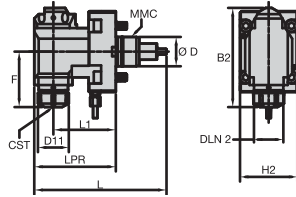
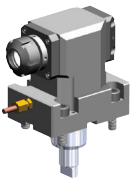


DMG MORI • 径向运动刀具 • KM™ • MMC 001



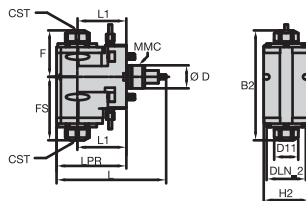
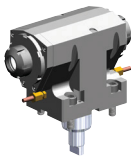
订货号	目录编号	CSWS	MMC	B2	D	F	FS	H2	L	L1	LPR	mST (Nm)	cp		CF	CS1	max RPM
												Bar	PSI				
6201262	TACU001KM40DR60648442 *	KM40	001	194	40	83,0	111,0	78	190	85,0	121	32	25	360	i/e	G 1/8	6000

DMG MORI • 径向运动刀具 • ER™ • MMC 001



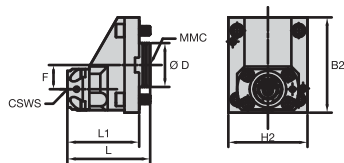
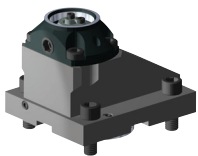
订货号	目录编号	CST	MMC	B2	D	D11	DLN 2	F	H2	L	L1	LPR	mST (Nm)	cp		CF	CS1	max RPM
													Bar	PSI				
6588937	TACU001ER25DR61301838	ER25	001	134	40	42	40	74,0	78	180	85,0	111	32	70	1000	i/e	G 1/8	12000
6588934	TACU001ER32DR61301835	ER32	001	138	40	50	47	78,5	78	180	85,0	111	32	70	1000	i/e	G 1/8	6000

DMG MORI • 径向运动刀具 • ER • MMC 001



订货号	目录编号	CST	MMC	B2	D	D11	DLN 2	F	FS	H2	L	L1	LPR	mST (Nm)	cp		CF	CS1	max RPM
														Bar	PSI				
6588936	TACU001ER25DR61301837 *	ER25	001	188	40	42	68	79,0	108,5	78	190	85,0	121	32	25	360	i/e	G 1/8	6000

DMG MORI • 轴向静态刀具 • KM • MMC 002

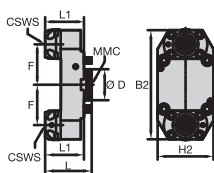
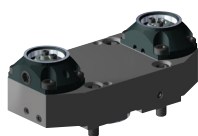


订货号	目录编号	CSWS	MMC	B2	D	F	H2	L	L1	Bar	cp		CF
											PSI		
6405029	TACU002KM50SA60649637	KM50	002	130	60	33,0	108	113	98,0	100	1500	i	



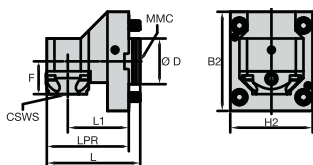
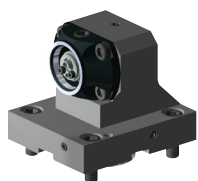
注: \* = 仅用于安装副主轴的机床。

### DMG MORI • 轴向静态刀具 • KM™ • MMC 002



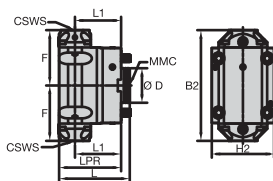
订货号	目录编号	CSWS	MMC	B2	D	F	H2	L	L1	Bar	cp	PSI	CF
6405030	TACU002KM50SA60649638 *	KM50	002	211	60	78,0	108	90	75,0	100		1500	i

### DMG MORI • 径向静态刀具 • KM • MMC 002



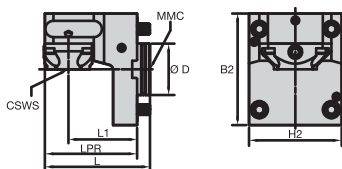
订货号	目录编号	CSWS	MMC	B2	D	F	H2	L	L1	LPR	Bar	cp	PSI	CF
6405381	TACU002KM50SR60649639	KM50	002	130	60	43,0	108	123	80,0	108	100		1500	i

### DMG MORI • 径向静态刀具 • KM • MMC 002



订货号	目录编号	CSWS	MMC	B2	D	F	H2	L	L1	LPR	Bar	cp	PSI	CF
6405382	TACU002KM50SR60649641 *	KM50	002	192	60	96,0	108	123	80,0	108	100		1500	i

### DMG MORI • 径向静态刀具 • KM • MMC 002

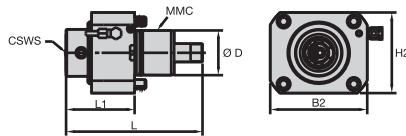


订货号	目录编号	CSWS	MMC	B2	D	H2	L	L1	LPR	Bar	cp	PSI	CF
6405388	TACU002KM50SR60649643	KM50	002	130	60	108	123	80,0	108	100		1500	i



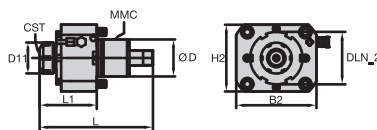
注: \* = 仅用于安装副主轴的机床。

DMG MORI • 轴向运动刀具 • KM™ • MMC 002



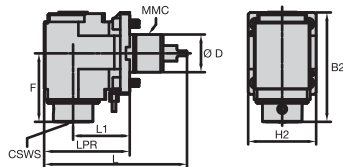
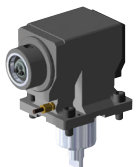
订货号	目录编号	CSWS	MMC	B2	D	H2	L	L1	cp				max RPM	
									mST (Nm)	Bar	PSI	CF		
6201268	TACU002KM40DA60648448	KM40	002	130	60	108	178	86,5	100	70	1000	e	M12X1	10000
6201269	TACU002KM40DA60648449	KM40	002	130	60	108	178	86,5	100	70	1000	i/e	M12X1	10000
6201265	TACU002KM50DA60648445	KM50	002	130	60	108	183	92,0	100	70	1000	e	M12X1	6000
6201266	TACU002KM50DA60648447	KM50	002	130	60	108	184	92,0	100	70	1000	i/e	M12X1	6000

DMG MORI • 轴向运动刀具 • ER™ • MMC 002



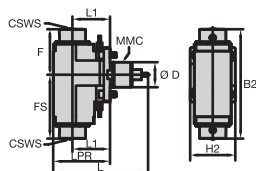
订货号	目录编号	CST	MMC	B2	D	D11	DLN_2	H2	L	L1	cp				max RPM	
											mST (Nm)	Bar	PSI	CF		
6589004	TACU002ER32DA61301864	ER32	002	150	60	50	85	108	184	90,0	100	70	1000	i/e	M12X1 & G 1/8	6000
6589005	TACU002ER32DA61301865	ER32	002	150	60	50	85	108	184	90,0	100	70	1000	i/e	M12X1 & G 1/8	10000
6588939	TACU002ER40DA61301840	ER40	002	150	60	63	89	108	189	94,5	100	70	1000	i/e	M12X1 & G 1/8	6000
6588940	TACU002ER40DA61301841	ER40	002	150	60	63	85	108	189	94,5	100	70	1000	i/e	M12X1 & G 1/8	10000

DMG MORI • 径向运动刀具 • KM • MMC 002



订货号	目录编号	CSWS	MMC	B2	D	F	H2	L	L1	LPR	cp				max RPM	
											mST (Nm)	Bar	PSI	CF		
6201272	TACU002KM40DR60648457	KM40	002	169	60	103,5	108	227	90,0	136	100	100	1500	e	G 1/8	10000
6201273	TACU002KM40DR60648458	KM40	002	169	60	103,5	108	227	90,0	136	100	70	1000	i/e	G 1/8	10000
6201270	TACU002KM50DR60648452	KM50	002	174	60	109,0	108	227	90,0	136	100	100	1500	e	G 1/8	6000
6201271	TACU002KM50DR60648453	KM50	002	175	60	109,0	108	227	90,0	136	100	70	1000	i/e	G 1/8	6000

DMG MORI • 径向运动刀具 • KM • MMC 002



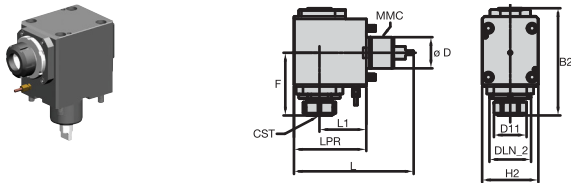
订货号	目录编号	CSWS	MMC	B2	D	F	FS	H2	L	L1	LPR	cp				max RPM	
												mST (Nm)	Bar	PSI	CF		
6201274	TACU002KM50DR60648459 *	KM50	002	224	60	109,0	115,0	108	227	90,0	136	100	100	1500	e	G 1/8	6000
6201275	TACU002KM50DR60648460 *	KM50	002	262	60	109,0	153,0	108	227	90,0	136	100	25	360	i/e	G 1/8	6000



注: \* = 仅用于安装副主轴的机床。

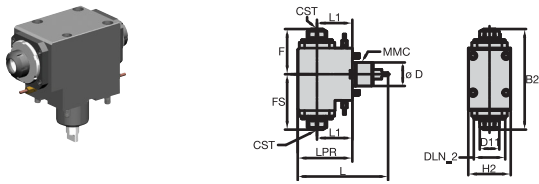


DMG MORI • 径向运动刀具 • ER™ • MMC 002



订货号	目录编号	CST	MMC	B2	D	D11	DLN_2	F	H2	L	L1	LPR	mST (Nm)	cp Bar	cp PSI	CF	CS1	max RPM
6589003	TACU002ER32DR61301863	ER32	002	202	60	50	80	116,5	108	230	90,0	139	100	70	1000	i/e	G 1/8	6000
6588938	TACU002ER40DR61301839	ER40	002	204	60	63	80	118,5	108	230	90,0	139	100	70	1000	i/e	G 1/8	6000
6588961	TACU002ER40DR61301842	ER40	002	204	60	63	80	118,5	108	230	90,0	139	100	70	1000	i/e	G 1/8	10000

DMG MORI • 径向运动刀具 • ER • MMC 002

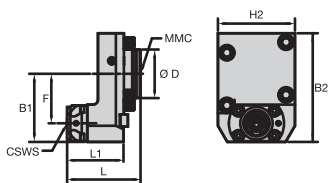


订货号	目录编号	CST	MMC	B2	D	D11	DLN_2	F	FS	H2	L	L1	LPR	mST (Nm)	cp Bar	cp PSI	CF	CS1	max RPM
6589006	TACU002ER32DR61301866	ER32	002	251	60	50	80	112,5	138,5	108	230	90,0	138	100	25	360	i/e	G 1/8	6000
6588962	TACU002ER40DR61301843	ER40	002	260	60	63	80	117,0	143,0	108	230	90,0	139	100	25	360	i/e	G 1/8	6000



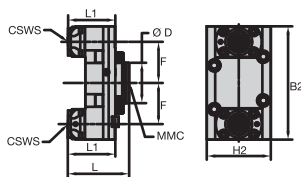
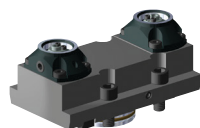
注: \* = 仅用于安装副主轴的机床。

OKUMA™ • 轴向静态刀具 • KM™ • MMC 009



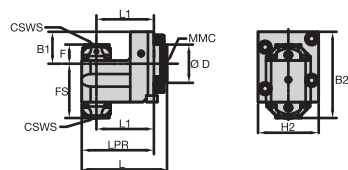
订货号	目录编号	CSWS	MMC	B1	B2	D	F	H2	L	L1	cp			CF
6411222	TACU009KM40SA60907362	KM40	009	84	134	60	61,0	95	91	70,0	Bar	PSI		i

OKUMA • 轴向静态刀具 • KM • MMC 009



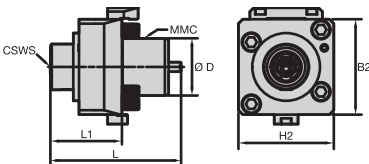
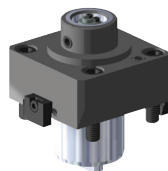
订货号	目录编号	CSWS	MMC	B2	D	F	H2	L	L1	cp			CF
6411223	TACU009KM40SA60907363 *	KM40	009	168	60	61,0	95	91	70,0	Bar	PSI		i

OKUMA • 径向静态刀具 • KM • MMC 009



订货号	目录编号	CSWS	MMC	B1	B2	D	F	FS	H2	L	L1	LPR	cp			CF
6411226	TACU009KM40SR60907371 *	KM40	009	50	135	60	30,0	85,0	95	134	90,0	113	Bar	PSI		i

OKUMA • 轴向运动刀具 • KM • MMC 009

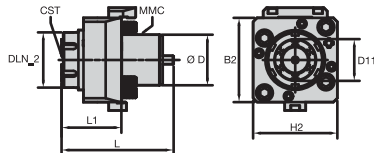


订货号	目录编号	CSWS	MMC	B2	D	H2	L	L1	mST (Nm)	cp			CF	CS1	max RPM
6411158	TACU009KM40DA60907348	KM40	009	100	60	100	137	75,0	50	70	1000	e	M12X1	6000	
6411159	TACU009KM40DA60907349	KM40	009	100	60	100	137	75,0	50	70	1000	i/e	M12X1	6000	



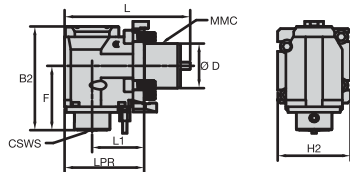
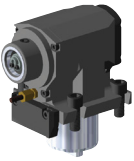
注: \* = 仅用于安装副主轴的机床。

OKUMA™ • 轴向运动刀具 • ER™ • MMC 009



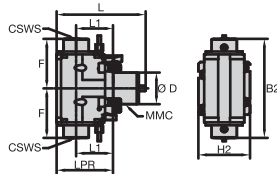
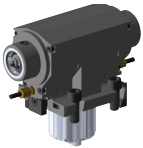
订货号	目录编号	CST	MMC	B2	D	D11	DLN_2	H2	L	L1	mST (Nm)	cp			CF	CS1	max RPM
6588964	TACU009ER40DA61301844	ER40	009	100	60	49	66	100	133	69,0	50	70	1000	i/e	M12X1	6000	

OKUMA • 径向运动刀具 • KM™ • MMC 009



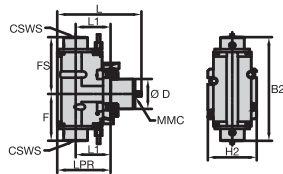
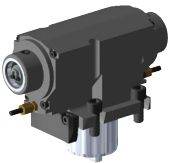
订货号	目录编号	CSWS	MMC	B2	D	F	H2	L	L1	LPR	mST (Nm)	cp			CF	CS1	max RPM
6411160	TACU009KM40DR60907352	KM40	009	140	60	86,5	98	169	70,0	107	50	100	1500	e	G 1/8	6000	
6411221	TACU009KM40DR60907354	KM40	009	144	60	86,5	98	169	70,0	107	50	70	1000	i/e	G 1/8	6000	

OKUMA • 径向运动刀具 • KM • MMC 009



订货号	目录编号	CSWS	MMC	B2	D	F	H2	L	L1	LPR	mST (Nm)	cp			CF	CS1	max RPM
6411224	TACU009KM40DR60907355 *	KM40	009	188	60	94,0	98	169	70,0	107	50	100	1500	e	G 1/8	6000	

OKUMA • 径向运动刀具 • KM • MMC 009

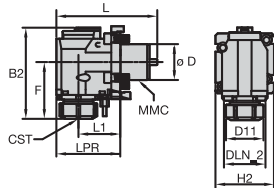


订货号	目录编号	CSWS	MMC	B2	D	F	FS	H2	L	L1	LPR	mST (Nm)	cp			CF	CS1	max RPM
6411225	TACU009KM40DR60907357 *	KM40	009	208	60	94,0	114,0	98	169	70,0	107	50	25	360	i/e	G 1/8	6000	



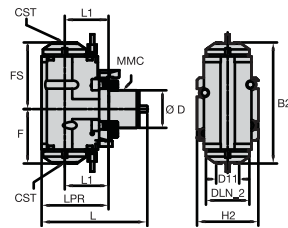
注: \* = 仅用于安装副主轴的机床。

OKUMA™ • 径向运动刀具 • ER™ • MMC 009



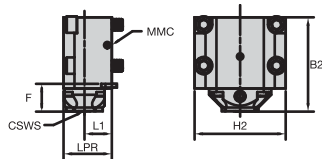
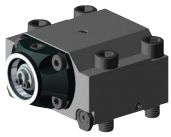
订货号	目录编号	CST	MMC	B2	D	D11	DLN_2	F	H2	L	L1	LPR	cp				max RPM	
													mST (Nm)	Bar	PSI	CF		
6588965	TACU009ER40DR61301845	ER40	009	151	60	63	70	91,5	98	169	70,0	107	50	70	1000	i/e	G 1/8	6000

OKUMA • 径向运动刀具 • ER • MMC 009



订货号	目录编号	CST	MMC	B2	D	D11	DLN_2	F	FS	H2	L	L1	LPR	cp				max RPM	
														mST (Nm)	Bar	PSI	CF		
6588966	TACU009ER32DR61301846 *	ER32	009	190	60	39	69	85,0	104,5	98	169	70,0	107	50	70	1000	i/e	G 1/8	6000

OKUMA • 径向静态刀具 • KM™ • MMC 013



订货号	目录编号	CSWS	MMC	B2	F	H2	L1	LPR	cp		
									Bar	PSI	CF
6391732	TACU013KM40SR60907381	KM40	013	103	30,0	100	30,0	53	100	1500	i
6391733	TACU013KM50SR60907382	KM50	013	108	35,0	100	40,0	69	100	1500	i



注: \* = 仅用于安装副主轴的机床。